

VENTURE  
OUT TO  
MINT  
MUSEUM  
RANDOLPH  
FOR...

1920s

Mint

PRESENT

AN EPIC  
JOURNEY  
THROUGH  
THREE  
GENERATIONS  
OF ART

ILLUSTRATION  
REALISM  
PORTRAITS  
LANDSCAPES  
MYSTERY

Dr. Kathleen V. Jameson, President & CEO of The Mint Museum,  
and Mr. Weston M. Andress, Chair of the Board of Trustees

INVITE YOU TO CELEBRATE THE VIP OPENING OF

# THE WYETH FAMILY: THREE GENERATIONS FROM THE BANK OF AMERICA COLLECTION

Thursday, March 9, 2017 | 6:30 pm  
Mint Museum Randolph  
2730 Randolph Road | Charlotte, NC 28207

Attire: Business casual  
RSVP by Thursday, March 2, 2017  
to Ellie Osborn at 704.337.2112  
or [ellie.osborn@mintmuseum.org](mailto:ellie.osborn@mintmuseum.org)

1921

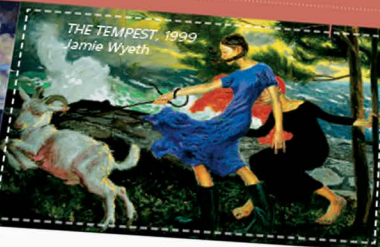


PATRIOT'S BARN, 2001  
Jamie Wyeth

A YOUNG MAINE FISHERMAN, 1933  
N.C. Wyeth



1980



THE TEMPEST, 1980  
Jamie Wyeth

1999

NUMBER 86, 1980  
Jamie Wyeth



int

PRESENT

AN EPIC  
JOURNEY  
THROUGH  
THREE  
GENERATIONS  
OF ART



GNOMES BOWLING, 1921, N.C. Wyeth

This exhibition is generously sponsored by Bank of America.



VENTURE  
OUT TO  
MINT  
MUSEUM  
RANDOLPH  
FOR...

1920s

M

VENTURE  
OUT TO  
MINT  
MUSEUM  
RANDOLPH  
FOR...

1920s



PRESENT

AN EPIC  
JOURNEY  
THROUGH  
THREE  
GENERATIONS  
OF ART



ILLUSTRATION  
REALISM  
PORTRAITS  
LANDSCAPES  
MYSTERY

Dr. Kathleen V. Jameson, President & CEO of The Mint Museum,  
and Mr. Weston M. Address, Chair of the Board of Trustees

INVITE YOU TO CELEBRATE THE VIP OPENING OF

# THE WYETH FAMILY: THREE GENERATIONS FROM THE BANK OF AMERICA COLLECTION

Attire: Business casual

RSVP by Thursday, March 2, 2017  
to Ellie Osborn at 704.337.2112  
or [ellie.osborn@mintmuseum.org](mailto:ellie.osborn@mintmuseum.org)

Thursday, March 9, 2017 | 6:30 pm

Mint Museum Randolph

2730 Randolph Road | Charlotte, NC 28207

1921

1980

1999

*A YOUNG MAINE FISHERMAN, 1933*  
N.C. Wyeth

*NUMBER 86, 1980*  
Jamie Wyeth



*PATRIOT'S BARN, 2001*  
Jamie Wyeth



*THE TEMPEST, 1999*  
Jamie Wyeth







PRESENT

AN EPIC  
JOURNEY  
THROUGH  
THREE  
GENERATIONS  
OF ART



*GNOMES BOWLING, 1921, N.C. Wyeth*

This exhibition is generously sponsored by Bank of America.



VENTURE  
OUT TO  
MINT  
MUSEUM  
RANDOLPH  
FOR...

1920s

